

Connections

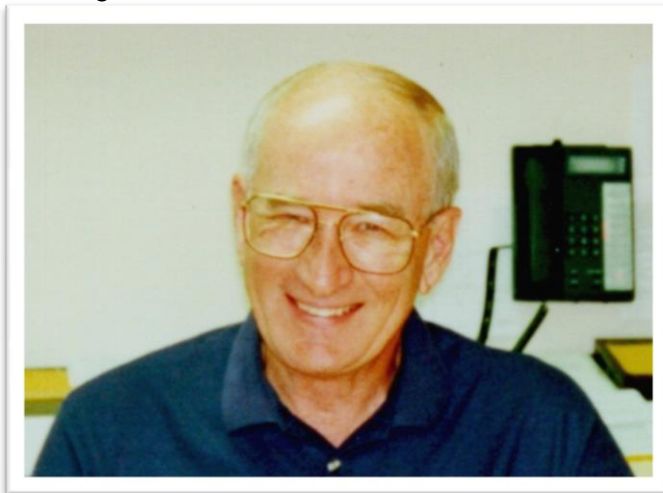
Holben, Martin & White's 39+ years of project experience include:

✓ Vehicular Bridges	✓ Ped. Bridges	✓ Educational	✓ University Fac.	✓ Offices
✓ Health Care	✓ Military Facilities	✓ Municipal Fac.	✓ Observatories	✓ Airports
✓ Commercial	✓ Recreational Fac.	✓ Dormitories	✓ Aircraft Hangars	✓ Libraries
✓ Parking Garages	✓ Industrial Fac.	✓ Laboratories	✓ Sports Facilities	✓ Museums
✓ Investigations	✓ Warehouses	✓ Renovations	✓ Correctional	✓ Towers

Randy Holben Retires, Founder of HMW

Randy Holben, founder of the firm, retired on October 31, 2008 after a long and successful career in both construction and structural engineering.

Randy graduated from the University of Denver with a Bachelor of Science Degree in Civil Engineering in 1954. A few years later, he took a graduate course in Civil Engineering from the University of Colorado and Business Management courses from Arizona State University. From 1955-1956, he served as a 1st Lieutenant with the U.S. Army Corps of Engineers. As Operations Officer in Port Construction, he was responsible for coordinating all construction operations and training.



Back in civilian life, he served as a Structural Engineer with Ken R. White Consulting Engineers in Denver, Colorado for several years.

In 1961, he moved to Phoenix and worked as Structural Engineer & Project

Manager on Design-Build Projects with Fisher Contracting Co.

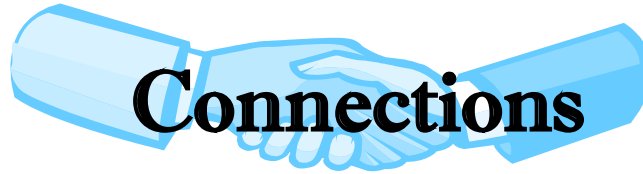
From 1963 through 1968, Randy joined Blanton and Cole, Architects and Engineers. Here he served as Structural Engineer on widely varied university, public school, commercial, and military projects.

He formed his own business, originally called R.E. Holben Structural Engineers in 1969. From that time, he molded the firm to provide excellent structural engineering services on educational,

municipal, institutional, commercial, military, and industrial projects. He was involved with healthcare project nationwide with the VA for many years. He was also structural engineer on many projects of historical significance, including San Xavier Mission, St. Phillip's in the Hills, Steinfeld Mansion, Manning House, UA's Old Main, & St. Ann's Church in Tubac, AZ.

For those of us who were privileged enough to work closely with him, he will be sorely missed. We wish him good health and great enjoyment in his retirement.

Inside this issue:	
Salute to Randy Holben, Founder of HMW	1
Eastern Arizona College Nursing Education Fac., Thatcher, AZ	2
Canoa Ranch Recreation Center, Green Valley, AZ	2
TUSD Vehicle Maintenance Facility, Tucson, AZ	3
Ft. Huachuca HUMINT Instructional Building, Ft. Huachuca, AZ	3
Cochise College Expansion, Douglas, AZ	4
Clements Sr. Center Expansion, Tucson, AZ	4



Eastern Arizona College Nursing Education Facility, Thatcher, Arizona

Eastern Arizona College in Thatcher is developing a Nursing Education Facility to meet the pressing health-care need in rural areas.

NTD Architecture has designed a two-story brick structure in the heart of the middle campus that will provide skills

laboratories, simulator rooms, computer studies and classrooms. The facility

structure, as designed by Warren White, P.E. at HMW, is a braced steel frame with brick veneer. The building is approximately 15,600-SF in size and will cost about \$4,250,000. Facility will be completed in early 2010.

Special thanks to

Mike Harris of NTD for this project description and photo!



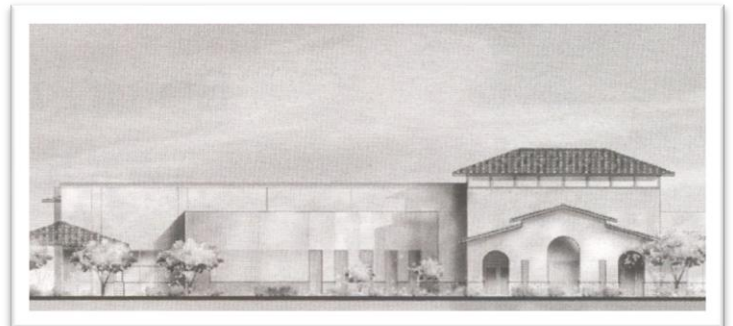
Canoa Ranch Recreation Center Green Valley, AZ

Phase One of this project includes:

A 14,000-SF Recreation Center to include aquatics, featuring a spa and Olympic-sized swimming pool; outdoor deck/patio; aerobics; fitness area; lobby; and restrooms/changing rooms. The estimated construction cost is \$2,400,000.

Project will be completed in 2009.

SBBL Architects is our Client for this project. Thomas Griffis, P.E. and Kelly Morales, P.E. are the structural engineers.





Connections

TUSD Vehicle Maintenance Facility Tucson, Arizona

The project consisted of a single-story maintenance building, which originally included a parts storage mezzanine with offices, break room and restrooms below. Total floor area was approximately 19,200-SF including the 1,500-SF mezzanine.

Due to cost constraints, the mezzanine will be future construction.

The construction cost was originally set at \$1,200,000 and project was completed in 2005.

Randy Holben, P.E. was the Structural Engineer on this project.

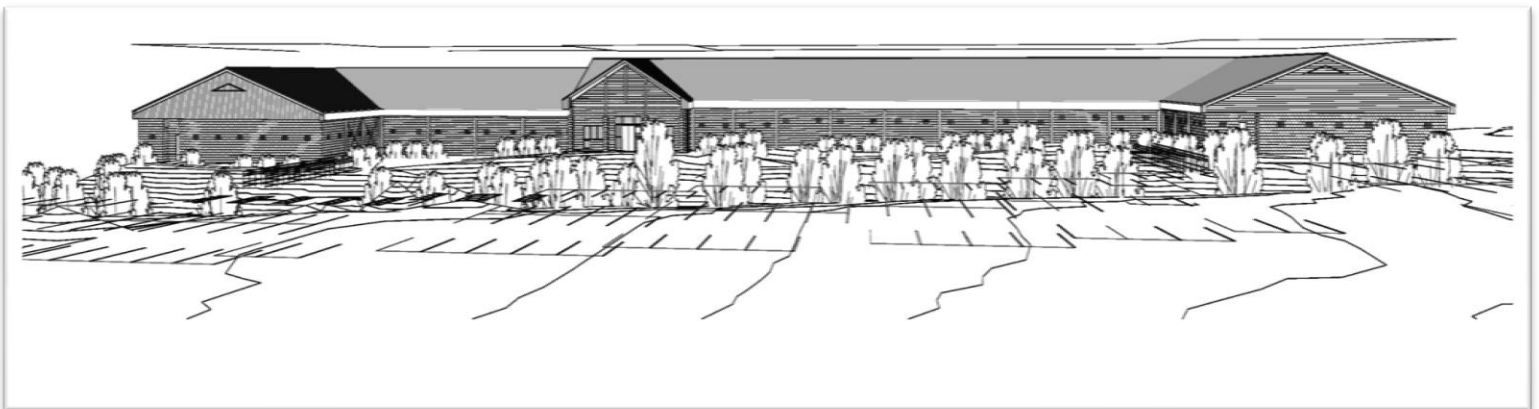
Our client was Roger Brooks of ABA Architects.

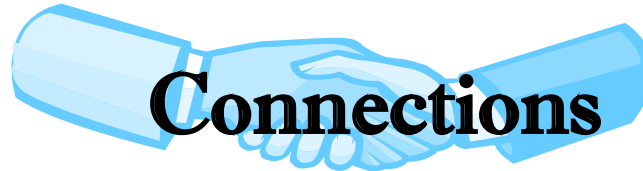
Fort Huachuca HUMINT Instructional Building Ft. Huachuca, AZ

This project consists of a 60,000-SF single-story, pre-engineered metal building to be used for general instruction. The construction consists of conventional spread footings, masonry walls and steel-framed pre-engineered building.

The Project Architects are Durrant Architects. Warren White, P.E. is the Structural Engineer and Project Manager.

The project will be completed in 2009 and carries an estimated construction cost of \$11,000,000.





Cochise College Expansion Douglas, Arizona

The Douglas Campus expansion includes a new 9,000-SF Science and ITV Building; new 10,650-SF Career and Technical Education (Vocational) Building; new Student Housing Complex (140-160 students) which replaces the existing two residence halls. The Housing Complex is a series of townhouse-style student housing units with 8- to 32-student occupancy per building. Student rooms will contain single or double occupancy around a living room

area for four or more students; and a new 5,000-SF Learning Center.

The Breckenridge Group are the project architects and Thomas C. Griffis, P.E. is the Lead Structural Engineer.

The estimated construction budget is \$12,500,000 and project will be completed in 2009.

Holben, Martin & White Consulting Structural Engineers, Inc.

2950 N. Country Club Road, Tucson, AZ 85716

www.hmwstructural.com

Phone: 520-327-9491 - Fax: 520-795-6140

Email: jmarshall@hmwstructural.com

Editor & Marketing Coordinator

Clements Sr. Center Expansion, Tucson, AZ

Project consists of a 5,000-SF single building with new exterior shaded

areas of approximately 6,000-SF and new unshaded areas of approximately 1,400-SF. A 400-SF entry structure may also be included.

Project construction cost is expected to be \$4.9 million and project is expected to be completed in 2009.

Our client is Durrant Architects. The Lead Structural Engineer is Warren White, P.E. Many thanks to Durrant for the site plan at left.

